

WESTCONNEX ROZELLE INTERCHANGE SUBSTATION CONSTRUCTION

CLIENT: JOHN HOLLAND CPB CONTRACTORS JV

LOCATION: ROZELLE NSW

DURATION: 3 MONTHS

PROJECT VALUE: 3.9 BILLION

VALUE OF ENGAGEMENT: \$650K

Ferrycarrig was engaged by JHCPB to fit-out and commission a new-build Sydney trains substation. This substation was a critical component of the project as it replaced an existing substation that had to be demolished for piling works to commence for the new road onto and Anzac Bridge.

After a strong delivery on various utility relocations scopes on the Rozelle project, the Ferrycarrig team completed the fitout of this new substation build which was considered a time critical component for the overall project progress at the Rozelle Interchange.

The scope of works for this project included the following:

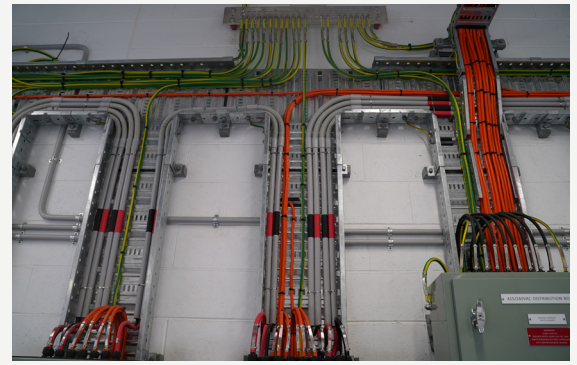
- Excavation, installation and testing of the external earth grid including earthing pits and drilling of 6 m earth rods into the ground.
- Installation of cable tray and cable containment for the High Voltage, Low Voltage communications, SCADA and fire systems.
- Design, Supply, install and commission a VESDA fire detection system-connected to the onsite SCADA Panel.
- Supply and install double insulated HV metering panels.
- Supply and install AC/DC distributions boards.
- Install all Low Voltage cables from AC/DC distribution boards to lighting circuits, power circuits, SCADA panels and switchgear.
- Unload and Installs all HV switchgear (supplied by Schneider Electrical) setting into position and lining up BUS bars for final installation by Schneider Electrical.
- Installation of battery cabinets and battery banks including testing and commissioning.
- Supply and install all internal and external power, lighting, emergency lighting and
- Supply and Install a generator connection box and temporary power supply to commission substation.
- Assist Sydney Trains with the commissioning and handover of the substation

A key area of value addition was that we were able to draw on previous experience on similar projects and raise RFIs and offer design solutions to the client at an early stage in the project giving the client plenty of time to get the approvals required to not slow down progress on site.

Ferrycarrig also worked with the external cladding supplier to design an innovative system to install the external lighting without voiding the warranty on a specialist Zinc coated cladding.

Due to our attention to detail and proactive approach we were able to deliver a quality product to the client ahead of schedule and within budget.

DUE TO OUR PROJECT TEAM'S ATTENTION TO DETAIL AND PROACTIVE APPROACH WE WERE ABLE TO DELIVER A QUALITY PRODUCT TO THE CLIENT AHEAD OF SCHEDULE AND WITHIN BUDGET



Internal Earth Bar and Terminations



AC and DC Boards and Battery Chargers



Switchgear Battery Charger Cabinets and Internal lighting



Battery Cabinets



Cable Ladder in Cable Pit